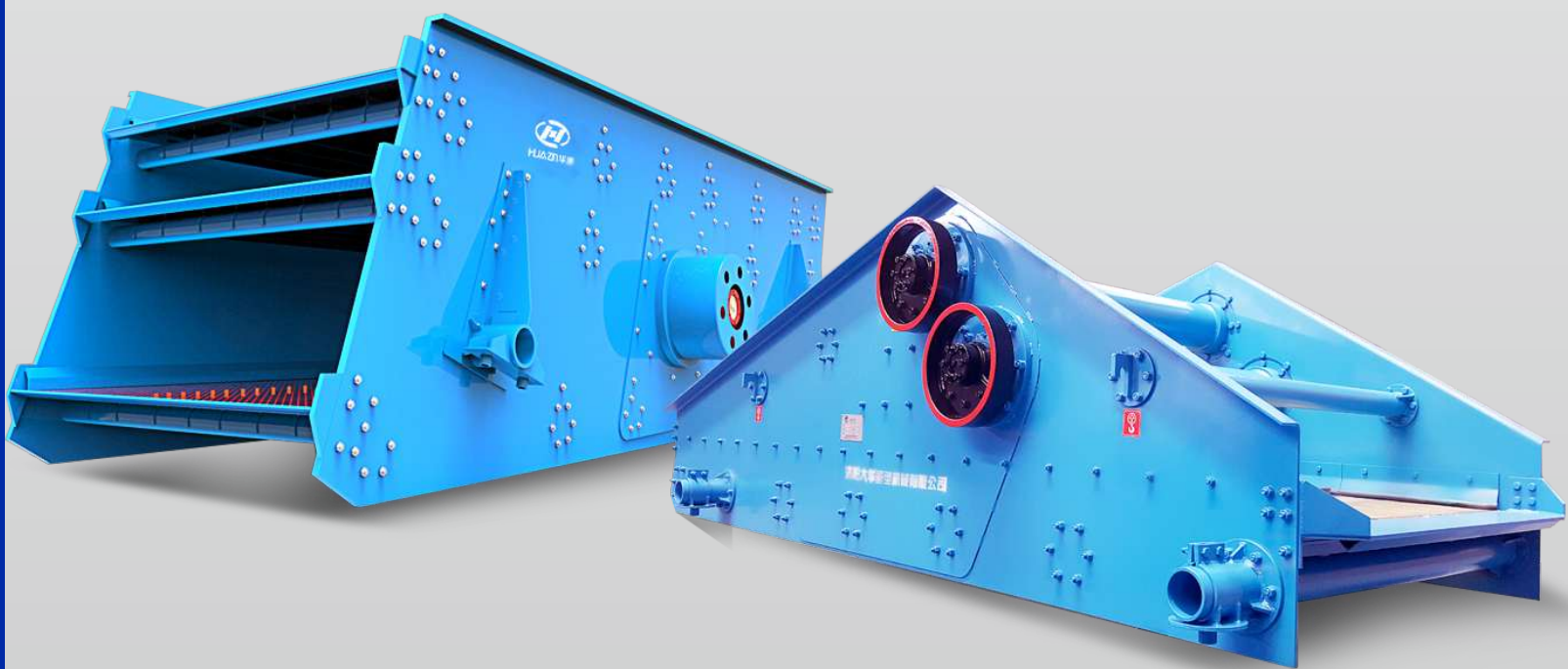


# YKR&ZKR

## SERIES

Vibrating Screen



## DESCRIPTION

YKR and ZKR Series Vibrating Screen is designed by our company based on many years practical experience and Chinese national conditions. It is widely used in the screening and classifying application for unconsolidated minerals and rocks in mining, building and building materials industries. ZKR Series Vibrating Screen is usually used in materials' dehydration and desliming. The single deck, double decks, triple decks or multiple decks vibrating screens can be supplied and used for dry or wet screening applications according to different customer requests. This series of screens has advantages of smart structure, high screening efficiency and high throughput capacity, which has been proved by production practices.

## FEATURES

- The frequency, amplitude and angle of vibrating screen can be adjusted, which increases screening efficiency.
- It can use the wire screen or polyurethane screen (tension type and modular type) with different mesh size.
- The vibration exciter has been designed with block eccentric, external modular and integrated, and can be lubricated by oil lubrication or thin oil automatic lubrication.
- Flanged side plate, beam and supporting base are connected with high-strength bolts. So that there is no welding stress existed.
- Elimination of vibration technology is applied to avoid horizontal shaking caused by sympathetic vibration when start or stop the machine.
- The composite rubber springs are used with features of stable vibration and low noise.
- It is optional to use the dust-proof sealing device for the vibrating screen according to customers' request.



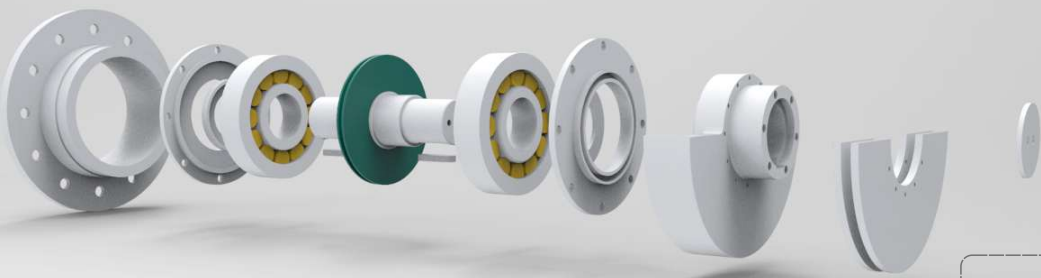
## TECHNICAL SPECIFICATIONS

ZKR Model	Decks	Mesh Size (mm)	Double Amplitude (mm)	Vibrating Frequency (r/min)	Max. Feed Size (mm)	Capacity (t/h)	Power (kW)
ZKR1230	1	0.25-50	6-9	970	≤150	7-144	2x4
ZKR1245	1	0.25-50	6-9	970	≤150	10-200	2x5.5
ZKR1260	1	0.25-50	6-9	970	≤150	12-280	2x11
ZKR1437	1	0.25-50	6-9	970	≤150	10-210	2x5.5
ZKR1836	1	0.25-50	6-9	970	≤150	13-250	2x7.5
ZKR1845	1/2	0.25-50	6-9	970	≤150	16-324	2x11/15
ZKR1860	1/2	0.25-50	6-8	970	≤150	10-360	2x15/22
ZKR2160	1/2	0.25-50	6-8	970	≤150	28-400	2x15/30

**Remarks:** The capacity is based on the dry production with density 1.6t/m<sup>3</sup>. It is only for reference, for information in details please contact us.

YKR Model	Decks	Mesh Size (mm)	Double Amplitude (mm)	Vibrating Frequency (r/min)	Max. Feed Size (mm)	Capacity (t/h)	Power (kW)
YKR1845	1/2/3	3-150	7-8	800	≤200	55-450	22/30
YKR1854	1/2/3/4	3-150	7-8	800	≤200	60-480	22/30/30/37
YKR1860	1/2/3	3-150	7-8	800	≤200	80-500	22/30/37
YKR2160	1/2/3/4	3-150	7-8	800	≤200	100-750	30/37/45/37
YKR2460	1/2/3	3-150	7-8	800	≤200	120-880	30/37/45
YKR2475	2/3	3-150	7-9	800	≤200	150-950	37/45/55
YKR2773	2/3	3-150	7-9	800	≤200	150-1000	45/55
YKR3060	2/3	3-150	7-9	800	≤200	150-900	45/45/55
YKR3073	1/2/3	3-150	7-9	800	≤200	150-1100	45/55/2×30
YKR3675	1/2/3	3-150	7-9	800	≤200	200-1200	2×(22/37/45)

**Remarks:** The capacity is based on the dry production with density 1.6t/m<sup>3</sup>. It is only for reference, for information in details please contact us.



## VALUE BUILT UPON SERVICES

In order to ensure that your equipment is under the best condition, it is highly recommended to use parts, components and recommended lubrication oil from Luoyang Dahua.



**LUOYANG DAHUA**  
HEAVY INDUSTRY SCIENCE & TECHNOLOGY CO., LTD.

Add. : No.280 Guanlin Road, Luoyang, 471023 P.R.China.

Tel. : +86-379-62669977

Fax : +86-379-62669988

E-mail: overseas@huazn.com

Web : www.lydhcrusher.com