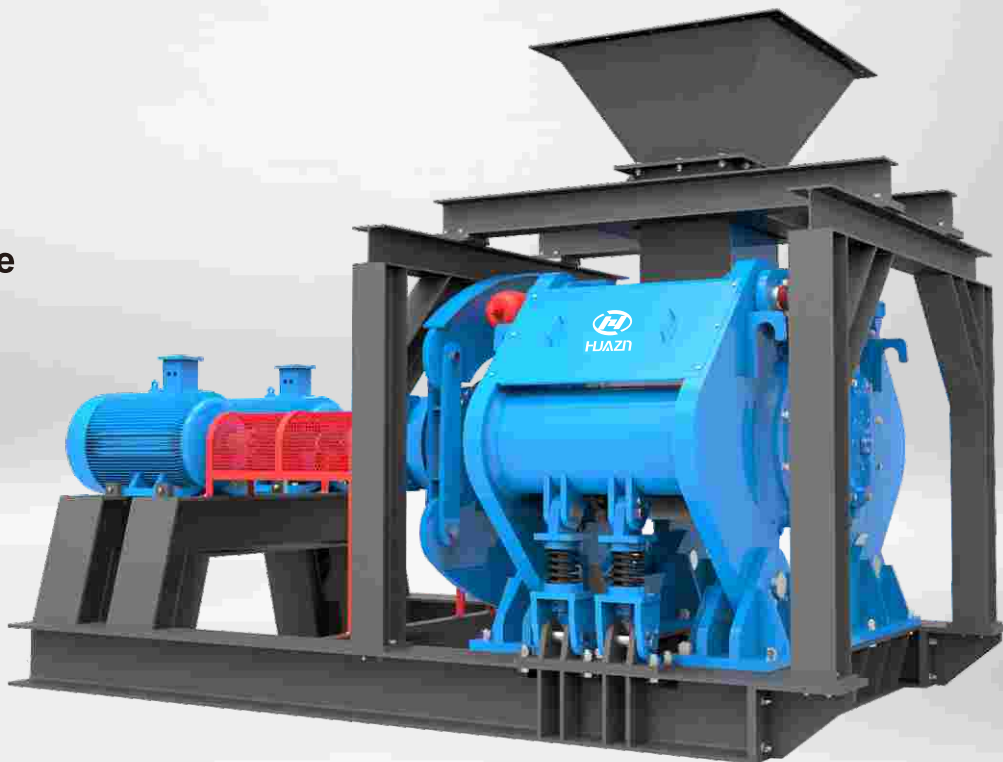


DHM

Series High Pressure Grinding Roll



◎ DESCRIPTION

DHM Series High Pressure Grinding Roll is a newly crushing and grinding equipment with wide adaptability for fine and superfine material process. Working together with the presetting crushing pressure, the two crushing rollers will be pushed in the opposite running directions by using the hydraulic cylinder with accumulator in order to ensure the stability of crushing pressure during the whole processing. Therefore, the high pressure crushing for materials will be achieved between two rollers. The machine can be widely used for many kinds of materials in fine crushing and grinding work to produce fine materials with various specifications such as construction, mining, metallurgy industries. The machine can also be used in fine grinding for metallurgical slags, which simplifies the processing technology and contributes more fine tailing for the following process.

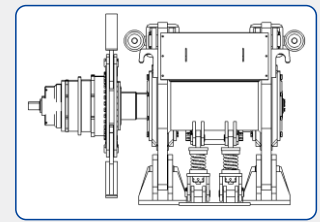
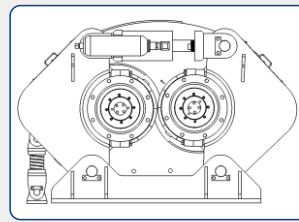
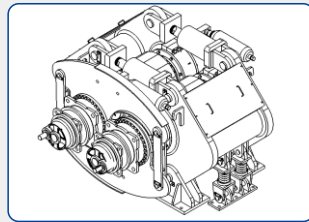
◎ TECHNICAL SPECIFICATIONS

Model	Roll Dimension		Motor		Reducer		Max. Pressure		Roll Speed	Feed Size	Processing Capacity
	Dia.	Width	Power	Pole	Model	Speed Ratio	Rock	Mineral			
DHM800/500	800mm	500mm	2×110kW	4P	Planetary gear	49.505	10MPa	18MPa	30.1rpm	-32mm	70-120t/h
DHM1000/625	1000mm	625mm	2×250kW	4P	Planetary gear	57.742	10MPa	18MPa	25.8rpm	-32mm	120-250t/h

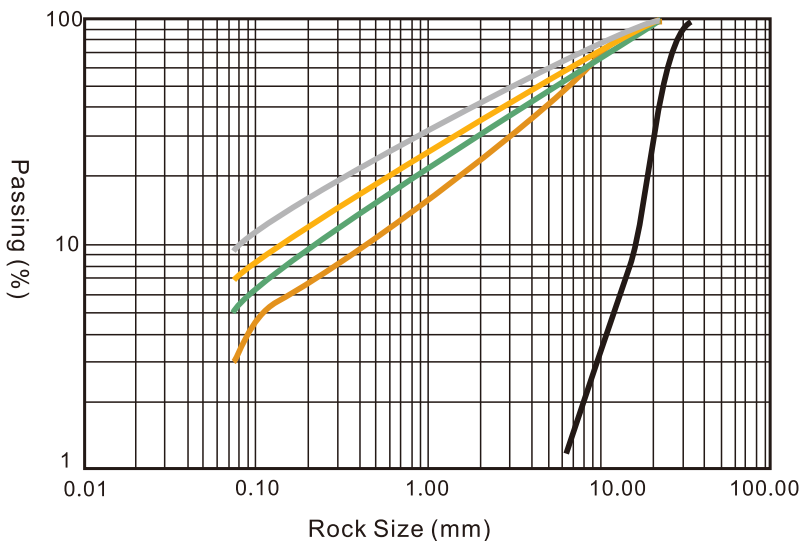
Remark: The capacity and granularity distribution should be affected by the feed size, hardness of materials, moisture and clay content.

FEATURES

- Applied the high pressure crushing mechanism, the machine will have the higher crushing efficiency, larger crushing ratio and wider adaptability.
- To adjust the clearance of roll surface automatically, so it can keep the crushing force constancy and makes the better grain shape and more fine granularity.
- The high wear-resistant alloy materials and embedded structure of liners for the roller surface, which extend its service life and make easy replacement without dismantling.
- Equipped with the hydraulic control system with the reliable performance, which makes the machine protected by the de-ironing and overload functions.
- The different working pressure should be set according to the different working conditions.
- The materials will be ground by the constant non-impact crushing pressure from crushing rollers, which makes lower noise with less dust.

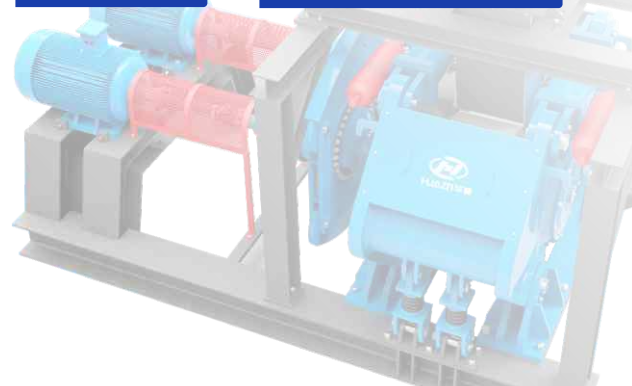


GRADATION CURVES



APPLICATION RANGE

- Limestone
- Sandstone
- Basalt
- Metallurgical slag
- Cobble
- Iron ore
- Granite
- Copper ore



Add. : No.280 Guanlin Road, Luoyang, 471023 P.R.China.
Tel. : +86-379-62669977 62669978
Fax : +86-379-62669988
E-mail: overseas@huazn.com
Web : www.lydhchina.com

